



# KACPEREK

technika napędowa



**DRIVES: PRODUCTION – TECHNICAL ADVISORY – DESIGN ENGINEERING - SERVICE**

**Since 1982 KACPEREK has been a reliable Polish producer of drives and transmission parts**

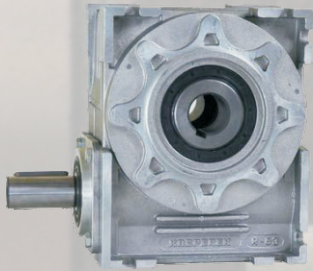
## WORM GEARS MR

The main advantage of worm gear MR series is the possibility to be produced not only in standard versions (as single/double output shaft, output flange, torque arm)

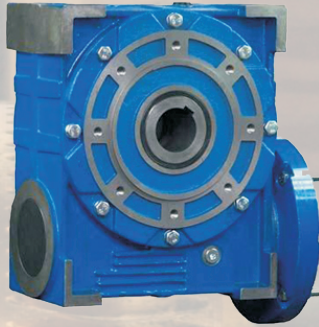
but also special, customized versions regardless the quantity ordered, for example:

- 'reducer' version with driving shaft used to mount a crank handle or pulley on it;
- version with double-side driving shaft to connect in series gears with parallel holes;
- coupling version to connect gear with motor by the flexible coupling to ensure soft start and equalization of misalignment of the drive;
- versions with special output holes: special shape, made acc. to metric or inch scale, etc;
- left coiled worm shafts for symmetric cooperation with right coiled worm shafts;
- parts of the gear can be made of different metals on request such as bronze worm wheel, steel worm hub;
- other customized versions.

MR gear spare parts are in regular/constant sale and can be also manufactured acc. to customer demands.



aluminum up to 4kW

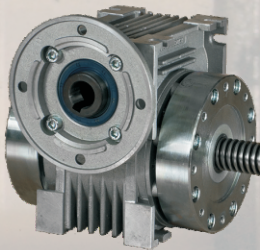


cast iron up to 37kW

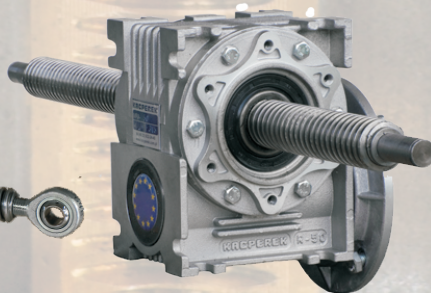


stainless steel

## SCREW DRIVES



screw jacks



worm-screw drives



trapezoid screws

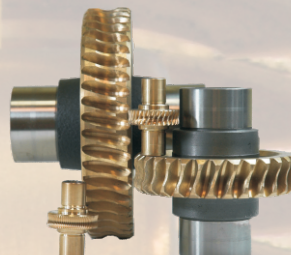
## SPARE PARTS AND TRANSMISSION PARTS



couplings



toothed wheels



worm wheels



worm shafts



# KACPEREK

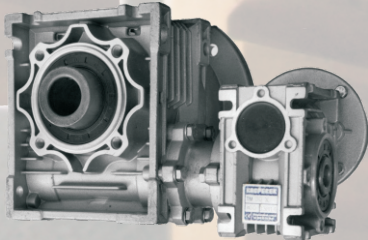
te ch n i k a n a p ę d o w a



## WORM GEARS type NMRV



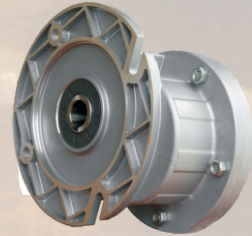
worm gears TM



drives for furnace feeders

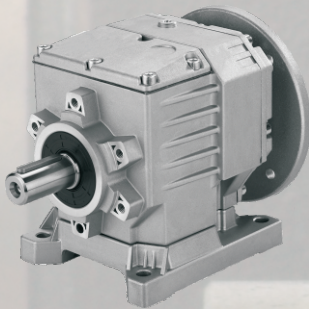


variable gears TW

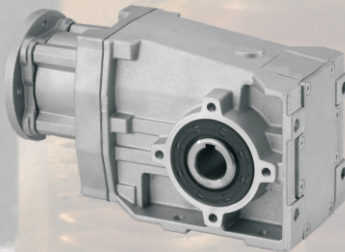


pre-stage helical units PZ

## TOOTHED GEARS



helical gears HM

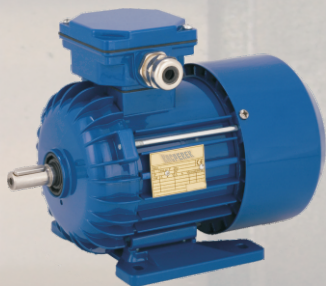


bevel gears HS



parallel shaft gears HR

## ELECTRIC MOTORS



single- and three phase motors, break motors, motors with additional cooling fan, customized motors

## INVERTERS AND ACCESSORIES



**DRIVES: PRODUCTION – TECHNICAL ADVISORY – DESIGN ENGINEERING - SERVICE**

**MECHANIKA MASZYN KACPEREK**

address: POLAND, 01-141 Warsaw, Wolska Str.82a

✉ [kacperek@kacperek.pl](mailto:kacperek@kacperek.pl)

☎ +48 22 751-99-39

[www.kacperek.pl](http://www.kacperek.pl)

www.kacperek.pl